



**MEDICAL  
COLLEGE  
OF WISCONSIN**

**CONTINUING EDUCATION  
PROGRAM**

**MEDICAL COLLEGE OF WISCONSIN  
PRESENTS A COMBINED CONFERENCE**

# **Mid-West Regional Trauma/Acute Care Surgery Symposium**

**AND**

# **Military/Civilian Research Colloquium: Neuroscience Innovations**

**Monday, June 3 – Wednesday, June 5, 2019**

**Potawatomi Hotel and Casino | Woodland Ballroom**

**1721 W Canal Street | Milwaukee, WI 53233**

**REGISTER TODAY!**  
**Neuroscience Innovations  
and Military/Civilian Research Colloquium:  
Trauma/Acute Care Surgery Symposium:  
A COMBINED CONFERENCE  
June 3-5, 2019**

8701 Watertown Plank Road  
P.O. Box 26509  
Milwaukee, WI 53226-0509



**PRE-SYMPOSIUM SKILL COURSES – MONDAY JUNE 3, 2019**

## MEDICAL COLLEGE OF WISCONSIN

**Course 1: Operative Trauma Exposures at MCW Anatomy Lab – 0800 –1200 pm**

Director: Marc de Moya, MD

5 cadavers (4 participants per cadaver and 1 instructor per cadaver)

Instructors: Drs. Peschman, Somberg, Streams, Webb

- Lectures prior to each dissection:
- Neck exploration
- Right SCL
- Left SCL
- Femoral/Popliteal Artery
- Aortic control
- Liver mobilization/advanced packing
- How to temporarily close abdomen (vac vs other options)
- Leg 4 compartment fasciotomies

**Course 2: Hands-on ED and Basic OR Skills Course for APPs, Surgeons, Emergency Physicians, Intensivists at MCW Anatomy Lab – 1300–1600**

Director: Marc de Moya, MD

Stations:

- |                              |                                   |
|------------------------------|-----------------------------------|
| • IO                         | • Cric                            |
| • Difficult Intubation       | • Extra-peritoneal pelvic packing |
| • EDT                        | • 10 minute talks for 1 hour      |
| • Chest tube (pig-tail/open) | • Hands-on 1400-1600              |

**Course 3: Ultrasound for Bedside Decision-Making – 0800–1500**

Director: Thomas Carver, MD; Mary Beth Phelan, MD, RDMS

- Basic U/S course 0800-1200
- Advanced Skills 1300-1500

**Course 4: Raise the Bar: Empowering Advanced Practice Providers to Maximize Clinical Outcomes for Critically Ill Patients – 0800-1200**

## KERRIGAN AUDITORIUM

Director: Pamela Souders, MSN, APNP

*The Heart of the ICU*

- The Future of Mechanical Circulatory Support: What's Hot and What's Not!
- Post Cardiac Arrest Care: Warm, Cold or Somewhere In Between?
- The Hunt for the Silver Bullet: Volume Status Assessment in the Critically Ill Patient.
- Panel Discussion: Cardiac Care Bringing it All Together

*Building Dynamic Critical Care Teams*

- Practicing at the Top of License: The Right Healthcare Provider at the Right Time.
- APP Critical Care Transition to Practice: Recruitment, Onboarding and Fellowship Programs.
- ICU Team Coverage: Strategies to Optimize Team Based Patient Care in a Variable Critical Care Environment.
- Panel Discussion: Critical Care Teams for the Future.

*Infectious Disease HOT Topics*

- Lurking in Your ICU: Resistant Gram-Negative Infections.
- Addressing Antibiotic Management and Overuse in the ICU.
- Panel Discussion: Infectious Disease - Coming to an ICU Near You

**SYMPOSIUM DAY 1 – TUESDAY, JUNE 4 | 0800-1700**

0745-0800	<b>INTRODUCTION/WELCOME</b>	Marc de Moya, MD
<b>Session I: 0800-0805</b>	<b>Moderator: Ian B.K. Martin, MD, MBA</b>	
0800-0805	CASE 1 Vignette (Penetrating Trauma Chest)	Ian B.K. Martin, MD, MBA
0805-0820	Use of Ultrasound in the Field and ED	Mary Beth Phelan, MD, RDMS
0820-0835	ATLS Updates: 10th Edition	Jacob Peschman, MD
0835-0850	Pre-hospital Resuscitation: Blunt vs Penetrating	M. Riccardo Colella, DO, MPH
0850-0905	Discussion Panel	Ian B.K. Martin, MD, MBA
<b>Session II: 0905-1010</b>	<b>Moderator: Ann O'Rourke, MD, MPH</b>	
0905-0910	CASE 2 Vignette (Blunt Trauma-Abd/Pelvis)	Ann O'Rourke, MD, MPH
0910-0925	CT-scan of Abd vs U/S screening	Jennifer Cone, MD, MHS
0925-0940	PTSD Screening in Trauma Centers	Terri deRoos-Cassini, MS, PhD
0940-0955	Severe Pelvic Trauma: When to Stabilize	Chad Beck, MD
0955-1010	Discussion Panel	Ann O'Rourke, MD, MPH
1010-1020	<b>COFFEE BREAK</b>	
<b>Session III: 1020-1300</b>	<b>Moderator: Marc de Moya, MD</b>	
1020-1050	Debate 1: Whole Blood Use in Trauma Resuscitation	Pro: Paula Ferrada, MD Con: Haytham Kaafarani, MD, MPH
1050-1150	<b>LUNDA KEYNOTE: Evolution of Far Forward Resuscitation Strategies</b>	<b>Hasan Alam, MD</b>
1150-1300	<b>LUNCH BREAK—LUNCH WILL BE PROVIDED</b>	
<b>Session IV: 1300-1405</b>	<b>Moderator: Haytham Kaafarani, MD, MPH</b>	
1300-1305	CASE 3 Vignette (Blunt Trauma-TBI/Torso)	
1305-1320	How Should We Intubate Patients with TBI?	Olga Koslow, MD, MPH
1320-1335	SBP Goals in Trauma (TBI, Spinal Cord/Aortic Injury)	Jill Streams, MD
1335-1350	Timing for Blunt Aortic Injury repair	Peter Rossi, MD
1350-1405	Discussion Panel	Haytham Kaafarani, MD, MPH
1405-1415	<b>COFFEE BREAK</b>	
<b>Session V: 1415-1700</b>	<b>Moderator: Paula Ferrada, MD</b>	
1415-1420	CASE 4 Vignette (Penetrating Vascular Trauma)	
1420-1435	SIRS in Trauma: DAMPs	Thomas Carver, MD
1435-1450	Is REBOA a Possibility?	Paula Ferrada, MD
1450-1505	Use of Shunts: Lessons from the Military	Lewis Somberg, MD
1505-1520	Discussion Panel	Paula Ferrada, MD
1520-1550	Debate 2: Use of TEG for Blood Transfusion	Marc de Moya, MD
	Pro: Thomas Carver, MD Con: Paula Ferrada, MD	
1550-1700	Expert Panel Case Discussion: Moderator deMoya	Panelists: Drs. Cone, Dennis, Ferrada, O'Rourke, Streams Nursing Commentary: Gordon-Meyer, NP
1700-1800	<b>POSTER SESSION AND RECEPTION</b>	

**SYMPOSIUM DAY 2 – WEDNESDAY, JUNE 5 | 0800-1700**

<b>Session VI: 0800-0905</b>	<b>Moderator: Jeremy Juern, MD</b>	
0800-0805	CASE 5 Vignette(Perforated Diverticulitis)	Jeremy Juern, MD
0805-0820	Benchmarking in ACS	Haytham Kaafarani, MD, MPH
0820-0835	Treatment of Sepsis: Surviving Sepsis	Panna Codner, MD
0835-0850	What is Best Surgical Option?	Travis Webb, MD, MHPE
0850-0905	Discussion Panel	Jeremy Juern, MD
<b>Session VII: 0905-0935</b>	<b>Moderator: Steven Kappes, MD</b>	
0905-0935	Debate 3: We Should Perform Interval Appendectomies	Pro: Dr. O'Rourke Con: Dr. Elegbede
0935-0950	<b>COFFEE BREAK</b>	
<b>Session VIII: 0950-1050</b>	<b>Moderator: Hasam Alam, MD</b>	
0950-0955	CASE 6 Vignette (Acute Appendicitis)	
0955-1010	FAST Track for Appendicitis?	Colleen Trevino, NP, PhD
1010-1025	Antibiotics for Appendicitis: Not Dead Yet?	Anu Elegbede, MD
1025-1040	How to Predict Poor Outcomes in ACS	Haytham Kaafarani, MD, MPH
1040-1050	Discussion Panel	Steven Kappes, MD
<b>Session IX: 1050-1155</b>	<b>Moderator: Mason Fisher, MD</b>	
1050-1055	CASE 7 Vignette (Acute Cholecystitis)	
1055-1110	Tokyo Guidelines and What to Do With Them?	Christopher Doggion, MD, MSPH, MBA
1110-1125	Should We Operate or Use Perc Drains?	Christopher Davis, MD, MPH
1125-1140	The Difficult Cholecystectomy: Tricks of the Trade	Travis Webb, MD, MHPE
1140-1155	Discussion Panel	Mason Fisher, MD, MPH
1155-1300	<b>LUNCH BREAK—LUNCH WILL BE PROVIDED</b>	
<b>Session X: 1300-1350</b>	<b>Moderator: Selwyn Rogers, MD, MPH</b>	
1300-1305	CASE 8 Vignette (ARDS)	
1305-1320	What to Do After Basic Vent Settings Fail?	Thomas Carver, MD
1320-1335	When to Refer to ECMO And How to Prepare Patient	Andrew Dennis, DO
1335-1350	Discussion Panel	Selwyn Rogers, MD, MPH
1350-1400	<b>COFFEE BREAK</b>	

## SYMPOSIUM DAY 2 — WEDNESDAY, JUNE 5 | 0800-1700 (CONTINUED)

<b>Concurrent Session Xa</b>	<b>Moderator: David Schultz, MD</b>	
1400-1600	Resident Research Presentation Competition	
<b>Concurrent Session Xb</b>	<b>Moderators: Kerry Short, NP, PhD; Susan Arnsdorf, APN, BC-FNP, Pamela Souders, APNP</b>	
1400-1600	Critical Case Reviews (for Nurses/NPs/PAs)	
1400-1500	Case 1 (Trauma Case): Initial Assessment, Resuscitation Strategies, Subacute Care	
1500-1600	Case 2 (ACS Case): Initial Assessment, Resuscitation Strategies, Post-op Care	
1600-1615	<b>BREAK</b>	
<b>Session XI:</b>	<b>Moderator: Marc deMoya, MD</b>	
1615-1645	Expert Panel Case Discussion— Moderator: Dr. de Moya	Panelists: Drs. Alam, Codner, O'Rourke, Somberg, Streams, Nursing Commentary: Susan Arnsdorf APN, BC-FNP David Schultz, MD, and Marc de Moya, MD
1645-1700	Closing Remarks and Announcement of Research Competition Winner	

### INVITED SPEAKERS

#### Hasan Alam, MBBS

Professor  
University of Michigan

#### Jennifer Cone, MD, MHS

Assistant Professor  
University of Chicago Medicine

#### Andrew Dennis, DO

Division Chief Pre-hospital and Resuscitation  
Cook County Health & Hospitals System

#### James DuCanto, MD

Anesthesiologist and Director of  
Sim Center  
Aurora Health Care

#### Paula Ferrada, MD

Professor  
Virginia Commonwealth University

#### Mason Fisher, MD

General Surgeon  
Gunderson Health System

#### Haytham Kaafarani, MD, MPH

Associate Professor, Director of  
Patient Safety and Quality  
Massachusetts General Hospital

#### Steven Kappes, MD

General Surgeon  
Aurora Health Care

#### Ann O'Rourke, MD, MPH

Associate Professor  
University of Wisconsin Madison

#### Selwyn Rogers, MD, MPH

Professor  
University of Chicago Medicine

#### David Schultz, MD

Medical Director, Trauma Center  
ThedaCare

### FEATURED MCW SPEAKERS

#### Susan Arnsdorf, APN, BC-FNP

Nurse Practitioner  
Division of Trauma and Acute Care Surgery

#### Chad Beck, MD

Assistant Professor  
Department of Orthopaedic Surgery

#### M. Riccardo Colella, DO, MPH

Professor  
Department of Emergency Medicine

#### Thomas Carver, MD

Associate Professor, SICU Medical Director  
Division of Trauma and Acute Care Surgery

#### Panna Codner, MD

Associate Professor  
Division of Trauma and Acute Care Surgery

#### Angelia Cole, MSN, APNP

Nurse Practitioner  
Cardiothoracic Surgery, Division of Mechanical  
Circulatory Support

#### Christopher Davis, MD, MPH

Assistant Professor  
Division of Trauma and Acute Care Surgery

#### Marc de Moya, MD

Associate Professor and Chief  
Division of Trauma and Acute Care Surgery

#### Terri deRoos-Cassini, MS, PhD

Associate Professor  
Division of Trauma & Acute Care Surgery

#### Christopher Dodgion, MD, MSPH, MBA

Assistant Professor  
Division of Trauma and Acute Care Surgery

#### Anu Elegbede, MD

Assistant Professor  
Division of Trauma and Acute Care Surgery

#### Allison Gible, PharmD

Pharmacist  
Division of Infectious Disease

#### David Herrmann, PharmD, BCCCP

Pharmacist  
Surgical Intensive Care

#### Lyle Joyce, MD, PhD

Professor of Cardiothoracic Surgery and Chief  
Division of Adult Cardiac Surgery

#### Jeremy Juern, MD

Associate Professor  
Division of Trauma and Acute Care Surgery

#### Janelle Juul, PharmD, BCCCP

Pharmacist  
Cardiovascular Intensive Care

#### Olga Kaslow, MD, PhD

Professor  
Department of Anesthesiology

#### Rebecca Krueger, MSN, AGACNP-BC

Nurse Practitioner  
Division of Infectious Diseases

#### Adrienne Markiewicz, MSN, AGACNP-BC

Nurse Practitioner  
Division of Pulmonary and Critical Care

#### Ian B.K. Martin, MD, MBA

Professor and Chair  
Department of Emergency Medicine

#### Jennifer McMahon, MSN, AGACNP-BC

Nurse Practitioner  
Department of Anesthesia, Division of Critical  
Care Anesthesia

#### Kelly Gordon-Meyer, NP

Nurse Practitioner  
Division of Trauma and Acute Care Surgery

#### William Peppard, PharmD, BCPS, FCCM

Pharmacist, Assistant Professor of Surgery  
Surgical Intensive Care

#### Jacob Peschman, MD

Assistant Professor  
Division of Trauma and Acute Care Surgery

#### Mary Beth Phelan, MD, RDMS

Professor  
Department of Emergency Medicine

#### Tracy Richardson, NP

Nurse Practitioner  
Division of Trauma and Acute Care Surgery

#### Peter Rossi, MD

Associate Professor, Chief  
Division of Vascular Surgery

#### Joyce L. Sanchez, MD, FACP

Assistant Professor of Medicine  
Division of Infectious Diseases

#### Kerry Short, NP

Nurse Practitioner  
Division of Trauma and Acute Care Surgery

#### Jamie Silkey, MHA, MPAS, PA-C

Physician Assistant, Assistant Director, MCP  
Advanced Practice Providers  
Department of Orthopaedic Surgery, Division of  
Foot and Ankle

#### Lewis Somberg, MD

Professor  
Division of Trauma and Acute Care Surgery

#### Pamela Souders, MSN, APNP

Nurse Practitioner  
Division of Trauma and Acute Care Surgery

#### Mary Stauber, DNP, RN, AGACNP-BC

Nurse Practitioner  
Division of Trauma and Acute Care Surgery

#### Jill Streams, MD

Assistant Professor  
Division of Trauma and Acute Care Surgery

#### Colleen Trevino, NP, PhD

Assistant Professor  
Division of Trauma and Acute Care Surgery

#### Sarah Vanderlinden, MPAS, PA-C, CAQ-Hospital Medicine

Physician Assistant, Assistant Director, MCP  
Advanced Practice Providers  
Department of Anesthesia, Division of Critical  
Care Anesthesia

#### Travis Webb, MD, MHPE

Professor and Associate Dean for Curriculum  
Division of Trauma and Acute Care Surgery

## SYMPOSIUM DAY 1 – TUESDAY, JUNE 4 | 0800-1700

0800-0820	OPENING REMARKS/WELCOME ADDRESS	Tom Hove, MPO, MHA
<b>Session 1:</b>		
<b>0820-1030</b>	<b>DEPARTMENT OF DEFENSE RESEARCH SESSION</b> <b>Moderator: Stephen Hargarten, MD, MPH</b>	
0820-0845	DoD Research Priorities and Funding Opportunity Highlights	Kathryn Kuhn
0845-0930	Congressionally Directed Medical Research Program: Lessons Learned and Tips for a Successful Grant Application	Christie Vu, PhD
0930-1030	Translation of DoD Research to Local Clinical Care	Stephen Hargarten, MD, MPH
1030-1050	BREAK	
<b>JOINT KEYNOTE:</b>		
<b>1050-1150</b>	<b>LUNDA LECTURE: Evolution of Far Forward Resuscitation Strategies</b>	<b>Hasan Alam, MD</b>
1150-1300	LUNCH BREAK—LUNCH IS PROVIDED	
<b>Session 2:</b>		
<b>1300-1700</b>	<b>POST-TRAUMATIC STRESS DISORDER RESEARCH SESSION</b> <b>Moderator: Terri deRoos-Cassini, MS, PhD</b>	
1300-1330	Framing the Issue: A Collaborative Approach to Advance the Science and Care of PTSD	Terri deRoos-Cassini, MS, PhD
1330-1400	Neural Mechanisms of Acute Versus Chronic PTSD	Christine Larson, PhD
1400-1430	Differential Involvement of the Endocannabinoid System in PTSD versus Depression	Jacklynn Fitzgerald, PhD
1430-1445	BREAK	
1445-1515	A Multi-tier Approach to Psychological Intervention After Traumatic InjurySD	Joshua Hunt, PhD
1515-1545	Socioenvironmental Stress and Health in Trauma	Lucas Torres, PhD
1545-1645	STRONG STAR and the Consortium to Alleviate PTSD: Shaping the Future of Combat-Related PTSD	Lt. Col.(R) Alan Peterson, PhD
1645-1700	Closing Remarks	Terri deRoos-Cassini, MS, PhD
1700-1800	SYMPOSIUM RECEPTION & POSTER SESSION: ALL ARE WELCOME	

## SYMPOSIUM DAY 2 – WEDNESDAY, JUNE 5 | 0800-1700

<b>Session 3:</b>		
<b>0800-1100</b>	<b>TRAUMATIC BRAIN INJURY RESEARCH SESSION</b> <b>Moderator: Mike McCrea, PhD</b>	
0800-0830	Framing the Topic: Advancements in TBI Science	Mike McCrea, PhD
0830-0900	Recognizing the Various Endophenotypes for the Diagnosis of TBI	Lindsay Nelson, PhD
0900-0930	Interface of TBI & Substance Abuse in Animal Models	Chris Olson, PhD
0930-1000	Emerging Imaging & Bloodborne Biomarkers in Diagnosing TBI	Tim Meyer, PhD
1000-1015	BREAK	
1015-1045	Competitive Research Presentations*	TBD
1100-1200	The Unique Challenges of Combatting TBI in Special Operations Forces	LTC Stephen DeLellis, MPAC, PA-C
1200-1300	LUNCH BREAK	
<b>Session 4:</b>		
<b>1300-1700</b>	<b>SPINAL CORD INJURY RESEARCH SESSION</b> <b>Moderator: Shekar Kurpad, MD</b>	
1300-1330	Framing the Topic: Advancements in SCI Research and Clinical Care and the Road Ahead	Shekar Kurpad, MD
1330-1400	Competitive Research Presentations*	TBD
1400-1430	Competitive Research Presentations*	TBD
1430-1445	BREAK	
1445-1515	Impact of Inflammation and Secondary Damage After Spinal Cord Injury	Antje Kroner-Milsch
1515-1545	Advanced Diffusion MRI Techniques to Provide Better Biomarkers and Prognostic Tools for SCI	Matthew Budde, PhD
1545-1600	CLOSING REMARKS	Shekar Kurpad, MD
	*20 min. presentation, 10 min. Q&A	Mike McCrea, PhD

## INVITED SPEAKERS

### Hasan Alam, MD

Norman W. Thompson Professor,  
Surgery Section Head of  
General Surgery  
University of Michigan Hospital  
Ann Arbor, MI

### Lieutenant Colonel (LTC) Stephen DeLellis, MPAC, PA-C

Deputy Command Surgeon  
US Army Special Operations  
Command  
Fort Bragg, NC

### Lieutenant Colonel (Retired)

**Alan Peterson, PhD, ABPP**  
STRONG STAR Consortium Director  
The University of Texas Health  
Science Center at San Antonio  
San Antonio, TX

### Jacklynn Fitzgerald, PhD

Postdoctoral Fellow, Department of  
Psychology  
University of Wisconsin-Milwaukee  
Milwaukee, WI

### Christine Larson, PhD

Professor  
Department of Psychology  
University of Wisconsin-Milwaukee  
Milwaukee, WI

### Lt. Col. (R) Alan Peterson, PhD, ABPP

STRONG STAR Consortium Director  
The University of Texas Health  
Science Center at San Antonio  
San Antonio, TX

### Lucas Torres, PhD

Associate Professor  
Department of Psychology  
Marquette University  
Milwaukee, WI

### Christie Vu, PhD

Program Manager  
US Army Medical Research &  
Materiel Command  
Fort Detrick, MD

## FEATURED MCW SPEAKERS

### Matthew Budde, PhD

Associate Professor  
Department of Neurosurgery

### Terri deRoos-Cassini, MS, PhD

Associate Professor  
Division of Trauma &  
Acute Care Surgery

### Stephen Hargarten, MD, MPH

Associate Dean, Center for  
Global Health  
Director, Comprehensive  
Injury Center  
Professor, Department of  
Emergency Medicine

### Joshua Hunt, PhD

Assistant Professor  
Division of Trauma &  
Acute Care Surgery

### Antje Kroner-Milsch, MD

Assistant Professor  
Department of Neurosurgery

### Kathryn Kuhn

Vice President,  
Office of Government &  
Community Relations

### Shekar Kurpad, MD

Professor & Chair  
Department of Neurosurgery

### Michael McCrea, PhD

Professor & Eminent Scholar  
Department of Neurosurgery

### Timothy Meier, PhD

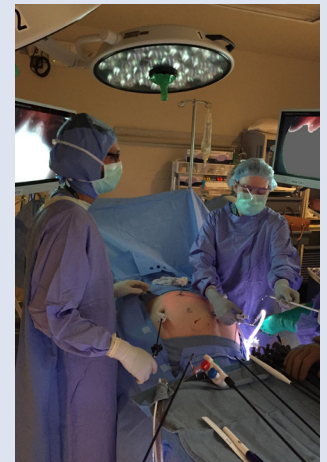
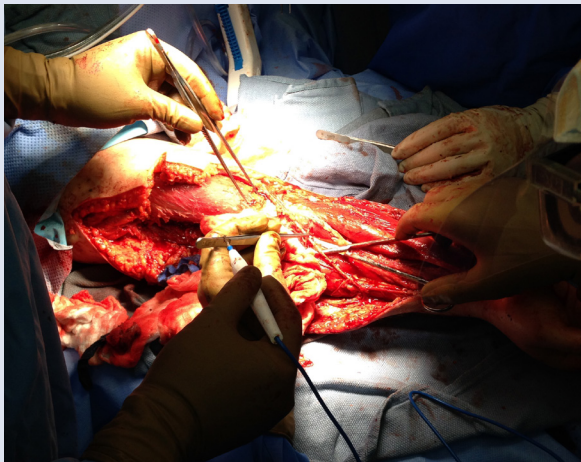
Assistant Professor  
Department of Neurosurgery

### Lindsay Nelson, PhD

Assistant Professor  
Department of Neurosurgery

### Christopher Olsen, PhD

Associate Professor  
Department of Pharmacology &  
Toxicology



## PLEASE REGISTER ONLINE IN A FEW STEPS

Our online registration process allows you to efficiently enroll in any offered CE course. To enroll in a course, please follow the detailed instructions below. Please note you will need to create a one-time “New User Account” before enrolling in a course.

**Online registration is required for evaluation and receiving CE credit.**

### Creating A New User Account:

Log in to [ocpe.mcw.edu/surgery](http://ocpe.mcw.edu/surgery), select **Create Account** in the upper right corner. Enter all of the required (\*) information.

**To Register (after New User Account has been set up at [ocpe.mcw.edu/surgery](http://ocpe.mcw.edu/surgery)):**

Select **Midwest Regional Trauma/Acute Care Surgery Symposium** under **Featured Courses**.  
Select **Registration/Take Course**, select your registration level and then **Add to Cart**.

### FEES

Fee includes registration, CE certification, nursing hours and meals.

	Physicians	APPs/Nurses/ Other health care professionals	Fellows/Residents/ Students
<b>Pre-Symposium Skill Courses: Monday, June 3</b>			
Course 1 only	\$250	\$250	Fellows, residents, and students are invited as space allows. Register by contacting Heidi Brittnacher at (414) 955-1831 or <a href="mailto:surgeryevents@mcw.edu">surgeryevents@mcw.edu</a> .
Course 2 only	\$250	\$250	
Course 1 and 2	\$400	\$400	
Course 3	\$250	\$250	
Course 4	N/A	\$250	
<b>Symposium: Tuesday, June 4 and Wednesday, June 5</b>	\$400	\$200 (\$100/day for RNs only)	\$100
<b>*Symposium and Skill Courses: Monday, June 3 through Wednesday, June 5</b>	\$750	\$550	\$100
<b>Military Symposium ONLY: Tuesday, June 4 &amp; Wednesday, June 5</b>	\$50	\$50	\$50

\*Also includes Military/Civilian admission.

### NURSING CONTACT HOURS

This symposium is offering nursing contact hours. Please see the back page for more information. This credit may be claimed on-site at the conclusion of the event.

### REGISTRATION DEADLINE IS MAY 31, 2019

A confirmation and additional information will be e-mailed upon receipt of your registration.

### REFUND POLICY

Withdrawals postmarked 15 days prior to the conference date will be fully refunded. If postmarked less than 15 days prior to the conference, withdrawals will result in a \$25 service fee. No refunds are available for withdrawals received on/after conference date.

For further information, please visit [www.mcw.edu/surgery](http://www.mcw.edu/surgery), or contact Heidi Brittnacher at (414) 955-1831 or [surgeryevents@mcw.edu](mailto:surgeryevents@mcw.edu).

### AMA PRA CATEGORY 1 CREDITS™ AND HOURS OF PARTICIPATION

#### June 3 Pre-Symposium Skill Courses

Course #1 = 4.0  
Course #2 = 3.0  
Course #3 = 6.0  
Course #4 = 4.0  
Total AMA PRA Category 1 Credits™ and Hours = 7.0

#### Trauma/ACS

Tuesday 6/4 = 7.5  
Wednesday 6/5 = 7.0  
Total AMA PRA Category 1 Credits™ and Hours = 14.5

#### Military/Civilian

Tuesday 6/4 = 6.5  
Wednesday 6/5 = 6.0  
Total AMA PRA Category 1 Credits™ and Hours = 12.5

**PROGRAM INFORMATION**

The Medical College of Wisconsin Department of Surgery, Comprehensive Injury Center, the Center for Neurotrauma Research, and Neuroscience Research Center present **A Combined Conference: Midwest Regional Trauma/Acute Care Surgery and Military/Civilian Research Colloquium: Neuroscience Innovations**. The pre-symposium skill courses on Monday, June 3 will occur at the Medical College of Wisconsin, 8701 Watertown Plank Road, Milwaukee, WI, 53226. The symposia will be held Tuesday, June 4 and Wednesday, June 5, 2019 at Potawatomi Hotel and Casino, Woodland Ballroom, 1721 W Canal Street, Milwaukee, WI 53233.

**TARGET AUDIENCE**

This symposium will be beneficial to:

- General Surgeons
- Trauma Surgeons
- Neurosurgeons and Neuroscientists
- Nurses and Health Care Professionals
- Advanced Practice Providers

**PURPOSE**

This three-day long educational activity is designed to provide updates and general information regarding the practice of emergency general surgery, surgical critical care and trauma care. The intended audience is primarily practicing general surgeons, neurosurgeons, neuroscientists, APPs, and nurses who would like to improve their knowledge and skills in caring for the acutely ill surgical patient.

Acute Care Surgery continues to evolve as a defined surgical expertise within the surgical community. The increasing severity of illness, gaining population and number of comorbidities of patients has resulted in a need for a special set of skills and knowledge in caring for the acutely ill patient. Trauma surgeons with expertise in critical care and emergency surgical procedures are well positioned as a core resource for others involved in the care of this patient population in the community. Many new developments in critical care, trauma and emergency general surgery have recently occurred and continue to evolve necessitating continued education. Our Symposium directors and planning team have reviewed feedback from previous symposiums evaluations as well as queried faculty from MCW and within the community to identify specific learning opportunities for practicing physicians in the region. Topics of greatest interest due to recent developments in management include, ultrasound, rib fixation, trauma skills for both ER physicians and surgeons, best practices for open abdomen, geriatric trauma, brain injury and psychological effects of trauma.

This year we are adding the joint military/ civilian component to address topics such as PTSD, TBI and SCI as well as a research presentation session. By combining the efforts of the ACS symposium and the Joining Forces symposium we will be able to more effectively provide the necessary knowledge needed by all attendees.

**SYMPOSIUM GOALS**

- Given a patient with blunt or penetrating trauma what are the resuscitation priorities
- Given a geriatric patient with multiple injuries, describe the appropriate evaluation and initial management of this patient
- Describe the likely impact of traumatic events on future psychological health of the injured patient and their caregivers.
- Identify neuroscience research and clinical practice initiatives used by the US military and Civilian researchers/ providers
- Describe the priorities and processes for DoD-funded research opportunities in the three topic areas.
- Critically evaluate research investigations and respond to critics of those results or methodology.

**EDUCATIONAL METHOD**

Instructional techniques will include lab, didactic lectures, small-group discussions, expert panel discussions, and case-based discussions. Learners will have an opportunity to interact with faculty and ask questions relevant to their own practice and learning needs.

**ACCME ACCREDITATION STATEMENT**

The Medical College of Wisconsin is accredited by the Accreditation Council for Continuing Medical Education to provide continuing medical education for physicians.

**AMA CREDIT DESIGNATION STATEMENT**

The Medical College of Wisconsin designates this live activity for a maximum of 7.0 *AMA PRA Category 1 Credits™* for the pre-conference and a maximum of 14.5 *AMA PRA Category 1 Credits™* for the conference. Physicians should claim only the credit commensurate with the extent of their participation in the activity.

**HOURS OF PARTICIPATION FOR ALLIED HEALTH CARE PROFESSIONALS**

The Medical College of Wisconsin designates the pre-conference for up to 7.0 hours of participation and the conference for up to 14.5 hours of participation for continuing education for allied health professionals.

**CONTINUING NURSING EDUCATION**

Froedtert & the Medical College of Wisconsin is an approved provider of continuing nursing education by the Wisconsin Nurses Association, an accredited approver by The American Nurses Credentialing Center's Commission on Accreditation.

Froedtert & the Medical College of Wisconsin is the approved provider of nursing contact hours for this activity in a joint provider agreement with the Medical College of Wisconsin.

7.5 contact hours will be awarded for Day 1 of the Symposium. 7.0 contact hours will be awarded for Day 2 of the Symposium.

**FOR NURSE PRACTITIONERS**

Medical College of Wisconsin, Inc. is approved as a provider of nurse practitioner continuing education by the American Association of Nurse Practitioners: AANP Provider Number 150930. This program has been approved for 7.0 contact hours of continuing education for the pre-conference and 14.5 for the conference (which includes 0.0 hours of pharmacology).

**FACULTY DISCLOSURE/DISCLAIMER**

Everyone who is in a position to control the extent of educational activity must disclose all relevant financial relationships with any commercial interests. They will disclose any unlabeled use or investigational use of pharmaceutical and medical device products. Determination of educational content for this program and the selection of speakers were solely the responsibility of the planning committee. Firms providing financial support did not have input in these areas. Agendas are subject to change, as necessitated by illness and/or scheduling conflicts.

**ACCOMMODATIONS****Potawatomi Hotel**

A block of rooms will be reserved for registrants until May 3 at a special rate of \$109 single, plus tax, per night. To make reservations online, please visit [www.paysbig.com](http://www.paysbig.com), select "Book a Room," and enter MED06032019 in the "Group Code" box. If you prefer to call the hotel, they can be reached at 414-847-7400. In order to receive the discounted rate, please ask for the MCW Trauma and Acute Care Symposium room block.

**PARKING**

Parking is free for symposium attendees in the structure. Level 4 connects to the hotel and is the same floor the event will be held on. There is free valet parking for hotel guests.

**SPECIAL ASSISTANCE**

Individuals with disabilities are encouraged to attend all Medical College of Wisconsin sponsored events. If you require special accommodations in order to attend this event, please contact Heidi Brittnacher at (414) 955-1831 or [surgeryevents@mcw.edu](mailto:surgeryevents@mcw.edu).

**FOR MORE INFORMATION**

If you have any questions or need additional information, please contact Heidi Brittnacher at (414) 955-1831 or [surgeryevents@mcw.edu](mailto:surgeryevents@mcw.edu) or visit our website at [www.mcw.edu/surgery](http://www.mcw.edu/surgery) and follow the link to the Trauma/Acute Care Surgery Symposium.